



FITTING INSTRUCTIONS FOR LP0113BK LICENCE PLATE BRACKET
HONDA FIREBLADE CBR1000RR 2012

Page | 1



THIS KIT CONTAINS THE ITEMS PICTURED AND LABELLED BELOW.
DO NOT PROCEED UNTIL YOU ARE SURE ALL PARTS ARE PRESENT.

Please note that the way the kit is packed does not necessarily represent the way of mounting to the bike

THE PARTS SHOWN MAY BE REPRESENTATIVE ONLY (FOR CLARITY OF INSTRUCTIONS ONLY)





LEGEND

- ITEM 1 = LICENCE PLATE BRACKET (TB0113BK PART 1) (x1).
ITEM 2 = INDICATOR BRACKET (TB0113BK PART 2) (x1).
ITEM 3 = INDICATOR BRACKET (TB0113BK PART 3) (x1).
ITEM 4 = R&G INDICATOR CONNECTORS (CON009) (x2).
ITEM 5 = R&G LICENCE PLATE ILLUMINATOR CONNECTOR (CON008) (x1).
ITEM 6 = M6x20mm LONG BUTTON HEAD BOLTS (x3).
ITEM 7 = M6 NYLOC NUTS (x3).
ITEM 8 = M6 WASHERS (x6).
ITEM 9 = M4x5mm LONG BUTTON HEAD BOLTS (x4).
ITEM 10 = M4 WASHERS (x4).
ITEM 11 = SELF ADHESIVE CABLE CLIP (x3).
ITEM 12 = RUBBER GASKET (RG0012) (x1).
ITEM 13 = LICENCE PLATE ILLUMINATOR ASSEMBLY (TO INCLUDE SHROUD) (LA0002) (x1).
ITEM 14 = REFLECTOR (x1).
ITEM 15 = 150mm LENGTH OF HEAT SHRINK (666-896) (x3).
ITEM 16 = R&G INDICATOR BLANKING GROMMETS (x2).

Page | 2

Please note that in cases where kits are packed with rubber washers holding the components onto the bolt – *the rubber washers should be thrown away!*

TOOLS REQUIRED

- Set of metric Allen keys to include 2.5, 4 and 5mm A/F sizes.
- Socket set to include 8 and 10mm A/F sockets and wrench.
 - Phillips driver.
 - Electrical pliers/crimps.



PICTURE 1



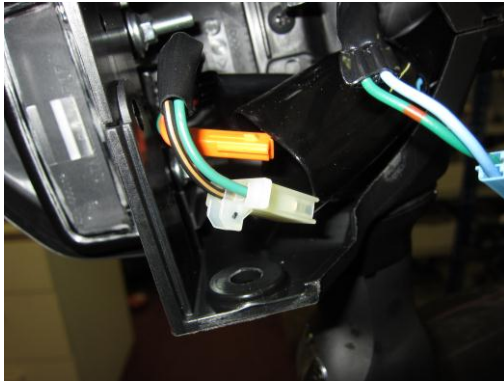
PICTURE 2



PICTURE 3



PICTURE 4



PICTURE 5



PICTURE 6



PICTURE 7



PICTURE 8



PICTURE 9



PICTURE 10



PICTURE 11



PICTURE 12



PICTURE 13



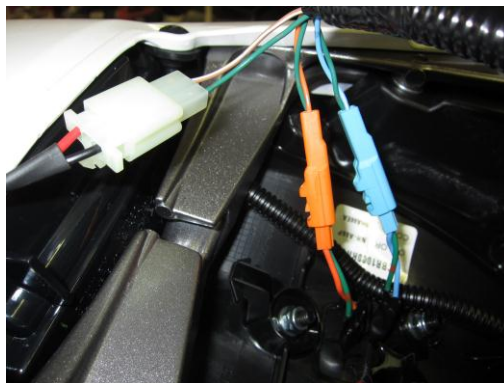
PICTURE 14



PICTURE 15



PICTURE 16



PICTURE 17



PICTURE 18

FITTING INSTRUCTIONS

- REMOVE PILLION SEAT USING KEY.
- REMOVE THE NUT HOLDING THE REFLECTOR AS SHOWN IN PICTURE 1.
- REMOVE THE REFLECTOR AND THE SPACER AS SHOWN IN PICTURE 2.
- REMOVE THE TWO BOLTS (ONE EITHER SIDE) HOLDING THE ORIGINAL LICENCE PLATE BRACKET AS SHOWN IN PICTURE 3.
- REMOVE THE ORIGINAL LICENCE PLATE BRACKET AS SHOWN IN PICTURE 4.
- DISCONNECT THE INDICATOR AND LICENCE PLATE ILLUMINATOR PLUGS AS SHOWN IN PICTURE 5.
- UNDO AND REMOVE THE TWO BOLTS HOLDING THE ORIGINAL LICENCE PLATE ILLUMINATOR BRACKET IN PLACE AS SHOWN IN PICTURE 6.
- REMOVE THE ORIGINAL LICENCE PLATE ILLUMINATOR BRACKET AS SHOWN IN PICTURE 7.



- UNDO THE TWO NUTS HOLDING THE INDICATORS IN POSITION AS SHOWN IN PICTURE 8.
- REMOVE THE INDICATORS AS SHOWN IN PICTURE 9.
- UNDO AND REMOVE THE THREE BOLTS HOLDING THE ORIGINAL LICENCE PLATE MOUNTING BRACKET AS SHOWN IN PICTURE 10.
- GENTLY PRISE APART THE ORIGINAL LICENCE PLATE MOUNTING BRACKET AS SHOWN IN PICTURE 11 AND REMOVE.
- GENTLY PULL THE WIRING LOOM BACK THROUGH THE UNDER-TRAY SO IT SITS UNDER THE PILLION SEAT.
- FIT THE NEW LICENCE PLATE ILLUMINATOR TO THE LICENCE PLATE BRACKET AS SHOWN IN PICTURE 12 AND USE THE HEAT SHRINK SUPPLIED TO COVER THE WIRES.
- FIT THE RUBBER GASKET TO THE LICENCE PLATE BRACKET AS SHOWN IN PICTURE 13.
- OFFER THE LICENCE PLATE ASSEMBLY UP TO BIKE AND SECURE USING THE THREE M6x20mm LONG BOLTS, SIX WASHERS AND THREE NYLOC NUTS SUPPLIED AS SHOWN IN PICTURES 14 AND 15.
- FIT THE INDICATORS OF CHOICE TO THE INDICATOR BRACKET AS SHOWN IN PICTURE 16 (THE BLUE PLUG SOCKETS ARE FOR THE RIGHT HAND SIDE AND THE ORANGE ARE FOR THE LEFT).
- IF USING MINI'S WE SUGGEST R&G PRODUCT CODE RG370 (TWO GROMMETS ARE SUPPLIED IN KIT TO FILL THE UNUSED HOLES IN THE INDICATOR BRACKET. IF USING A LARGE LICENCE PLATE IT IS ADVISABLE TO USE THE LONGER INDICATOR BRACKET (TB0113 PART 2), IF USING A SMALLER LICENCE PLATE YOU MAY USE THE SHORTER INDICATOR BRACKET (TB0113 PART 3). WHEN THE ORIGINAL INDICATORS ARE FITTED THE ORIGINAL THREAD WILL BE SHOWING THIS MAY BE REMOVED BY CUTTING OR DISGUISED USING SMALL LENGTHS OF HEAT SHRINK AS SHOWN IN PICTURE 18.
- OFFER THE ASSEMBLED INDICATOR BRACKET UP TO THE LICENCE PLATE BRACKET AND SECURE USING THE FOUR M4x5mm LONG BUTTON HEAD BOLTS AND WASHERS AS SHOWN IN PICTURE 18.
- USING THE CONNECTORS SUPPLIED CONNECT THE LICENCE PLATE ILLUMINATOR AND INDICATORS AS SHOWN IN PICTURE 17, IT IS A GOOD IDEA TO CHECK THE OPERATION OF ALL LIGHTS AT THIS STAGE.
- TIDY THE WIRES UNDER THE SEAT TO PREVENT SNAGGING WHEN REFITTING THE PILLION SEAT.
- REFIT SEAT.
- REFIT LICENCE PLATE (IT MAY REQUIRE DRILLING).
- **IMPORTANT: IF FITTING A FULL-SIZE LICENCE PLATE AND PLACING IT FAR DOWN ON THE LICENCE PLATE HANGER, THERE IS A SMALL CHANCE OF THE LICENCE PLATE HITTING THE BACK WHEEL UNDER HEAVY LOAD AND OVER LARGE BUMPS IN THE ROAD. IT IS YOUR RESPONSIBILITY TO CHECK FOR THIS POSSIBILITY AND TAKE AVOIDING ACTION. FAILURE TO CHECK THIS COULD RESULT IN SERIOUS INJURY.**
- DEPENDING ON LOCAL LAWS, ATTACH ENCLOSED REFLECTOR IN AN APPROPRIATE LOCATION.
- TEST THE LICENCE PLATE ILLUMINATOR AND ALL LIGHTS BEFORE RIDING.

R&G Racing

Unit 1, Shelley's Lane, East Worldham, Alton, Hampshire, GU34 3AQ

Tel: +44 (0)1420 89007 Fax: +44 (0)1420 87301 www.rg-racing.com Email: info@rg-racing.com



ISSUE 1 14/12/2011 (NSY)

CONSUMER NOTICE

Page | 7

The catalogue description and any exhibition of samples are only broad indications of the Products and R&G may make design changes which do not diminish their performance or visual appeal and supplying them in such state shall conform to the order. The Buyer acknowledges no representation or warranty (other than as to title) has been given or will apply to the Products other than those in R&G's order or confirmation and the Buyer confirms it has chosen the Products as being of merchantable quality and suitable for its particular purposes. Where R&G fits the Products or undertakes other services it shall exercise reasonable skill and care and rectify any fault free of charge unless the workmanship has been disturbed. The Buyer is responsible for ensuring that the warranty on the motorcycle is not affected by the fitting of the Products. On return of any defective Products R&G shall at its option either supply a replacement or refund the purchase money but shall not be liable if the Products have been modified or used or maintained otherwise than in accordance with R&G's or manufacturer's instructions and good engineering practice or if the defect arises from accident or neglect. Other than identified above and subject to R&G not limiting its liability for causing death and personal injury, it shall not be liable for indirect or consequential loss and otherwise its liability shall be limited to the amounts paid by the Buyer for the Products or the fitting or service concerned. These terms do not affect the Buyer's statutory rights.

R&G RACING RETURNS POLICY (NON-FAULTY GOODS)

Returns must be pre-authorized (if not pre-authorized the return will be rejected). Goods may only be returned direct to us if they were purchased direct from us (customer must prove if necessary). Otherwise to be returned to original vendor. Goods must be in resellable condition, in the opinion of R&G Racing. All returns are subject to a 25% restocking and handling fee (25% of the gross value exc. P&P – at the prevailing price at time of purchase). The customer must pay any and all carriage charges. No returns of discontinued products, unless within 14 days of purchase. This policy does not affect your statutory rights and does not refer to faulty goods.

R&G Racing

Unit 1, Shelley's Lane, East Worldham, Alton, Hampshire, GU34 3AQ

Tel: +44 (0)1420 89007 Fax: +44 (0)1420 87301 www.rg-racing.com Email: info@rg-racing.com



INSTRUCTIONS DE MONTAGE POUR LP0113BK
SUPPORT PLAQUE D'IMMATRICULATION
HONDA FIREBLADE CBR1000RR 2012

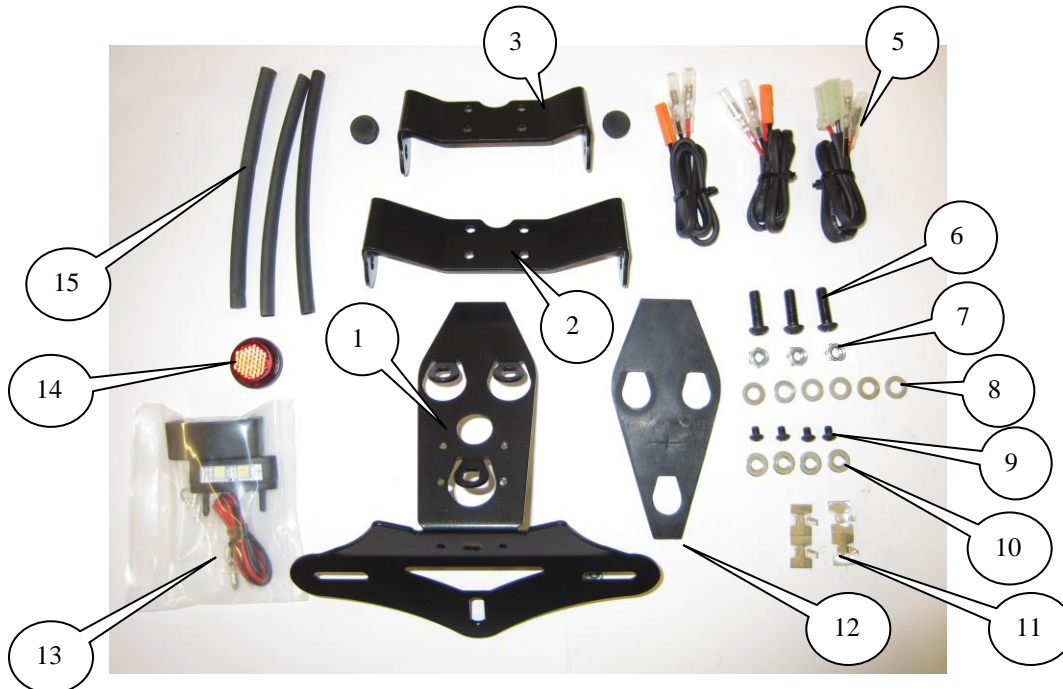
Page | 8



Verifier le contenu de la boîte avant de deballer les pieces

La façon dont le kit est emballé ne représente pas nécessairement la façon de le monter sur la moto

Les parties représentées peuvent parfois être uniquement représentatives
(Pour la clarté des explications)





LEGENDE

- IMAGE 1 = SUPPORT PLAQUE D'IMMATRICULATION (TB0113BK PART 1) (x1)
IMAGE 2 = CLIGNOTANT PLAQUE (TB0113BK PART 2) (x1).
IMAGE 3 = CLIGNOTANT PLAQUE (TB0113BK PART 3) (x1).
IMAGE 4 = R&G CONNECTEURS CLIGNOTANTS (CON009) (x2).
IMAGE 5 = R&G CONNECTEURS LUMINEUX (CON008) (x1).
IMAGE 6 = M6x20mm LONGS BOULONS A TETE RONDE (x3).
IMAGE 7 = M6 ECROUS EN NYLOC (x3).
IMAGE 8 = M6 RONDELLES (x6).
IMAGE 9 = M4x5mm LONGS BOULONS A TETE RONDE (x4).
IMAGE 10 = M4 RONDELLES (x4).
IMAGE 11 = ADHESIF CLIP CABLE (x3).
IMAGE 12 = JOINT EN CAOUTCHOUC (RG0012) (x1).
IMAGE 13 = ASSEMBLAGE DE LUMIERES DE PLAQUE (LA0002) (x1).
IMAGE 14 = REFLECHISSANT (x1).
IMAGE 15 = 150mm LONGEUR PROTECTION CHALEUR (666-896) (x3).
IMAGE 16 = R&G ERSE D'EXTINCTION DE CLIGNOTANTS (x2).

Page | 9

Notez que dans les cas où les kits sont emballés avec des rondelles en caoutchouc, composantes du boulon - les rondelles en caoutchouc doivent être jetées !

OUTILS REQUIS

- Set of metric Allen keys to include 2.5, 4 and 5mm A/F sizes.
- Socket set to include 8 and 10mm A/F sockets and wrench.
 - Phillips driver.
- Electrical pliers/crimps.



IMAGE 1



IMAGE 2



IMAGE 3



IMAGE 4

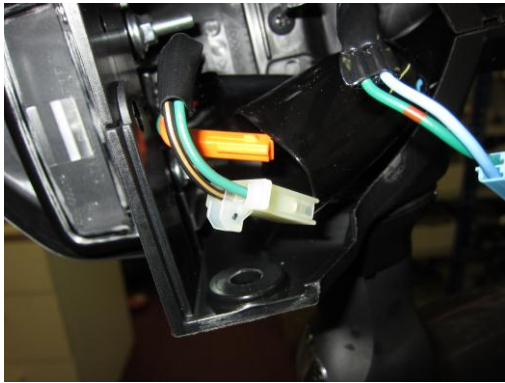


IMAGE 5

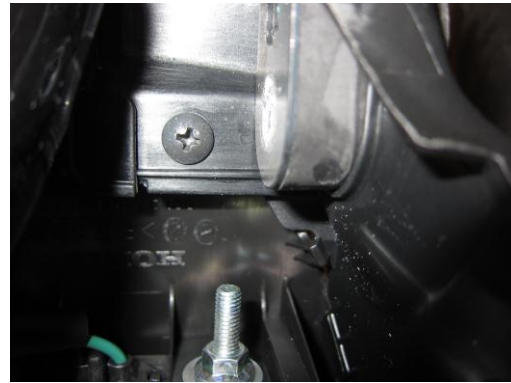


IMAGE 6



IMAGE 7



IMAGE 8

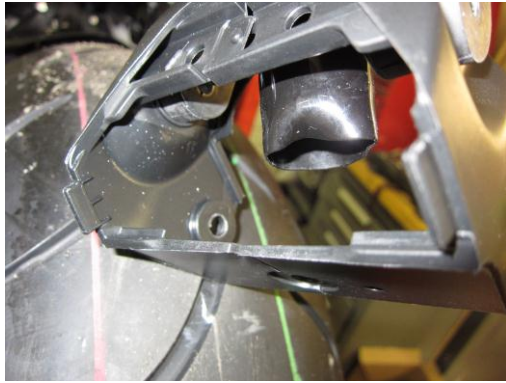


IMAGE 9



IMAGE 10



IMAGE 11



IMAGE 12



IMAGE 13

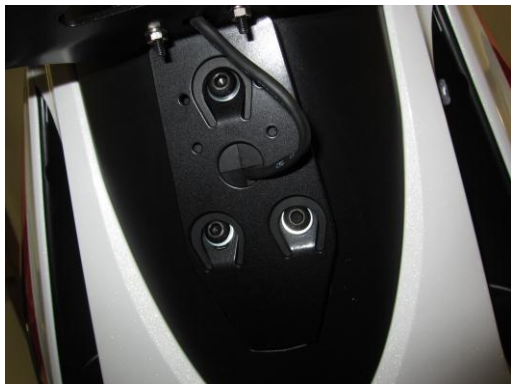


IMAGE 14



IMAGE 15



IMAGE 16

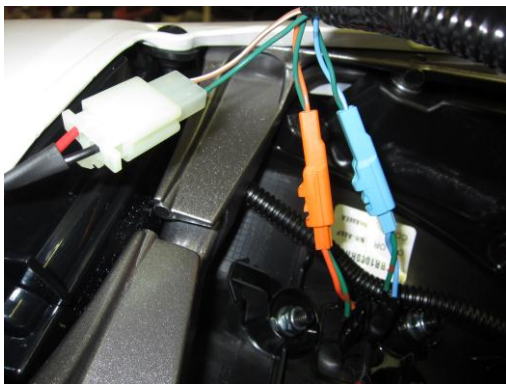


IMAGE 17



IMAGE 18

INSTRUCTIONS DE MONTAGE

- ENLEVER LE SIÈGE A L'AIDE DE LA CLE
- ENLEVER L'ÉCROU) QUI TIENT LE RÉFLECTEUR COMME INDIQUÉ DANS L'IMAGE 1.
- ENLEVER LE REFLECHISSANT ET L'ENTRETOISE COMME INDIQUÉ DANS L'IMAGE 2.
- ENLEVER LES DEUX BOULONS DE LA PLAQUE D'IMMATRICULATION D'ORIGINE COMME INDIQUÉ DANS L'IMAGE 3.
- ENLEVER LES BOULONS DES CLIGONTANTS D'ORIGINE DE LA PLAQUE D'IMMATRICULATION COMME INDIQUÉ DANS L'IMAGE 4.
- DÉBRANCHER LES PRISES DE CLIGNOTANTS DE PLAQUE D'IMMATRICULATION COMME INDIQUÉ DANS L'IMAGE 5.



- DÉFAIRE ET ENLEVER LES DEUX BOULONS (VERROUS) TENANT L'ILLUMINATEUR DE PLAQUE D'IMMATRICULATION ORIGINALE EN PLACE COMME INDIQUÉ DANS L'IMAGE 6.
- ENLEVER LE CACHE DES CLIGNOTANTS ORIGINAUX COMME INDIQUÉ DANS L'IMAGE 7.
- DÉFAIRE LES DEUX NOIX TENANT LES CLIGNOTANTS EN POSITION ENLEVER LES CLIGNOTANTS COMME INDIQUÉ DANS L'IMAGE 9.
- DÉFAIRE LES TROIS BOULONS TENANT LA PLAQUE D'IMMATRICULATION COMME INDIQUÉ DANS L'IMAGE 10.
- ECARTER DOUCEMENT LE SUPPORT DE PLAQUE D'ORIGINE COMME INDIQUE SUR L'IMAGE 11 ET L'ENLEVER.
- TIREZ DOUCEMENT SUR LE CABLAGE POUR QU'ELLE SE METTE SOUS LA SELLE.
- MONTER LES NOUVEAUX CLIGNOTANTS POUR LE NOUVEAU SUPPORT DE PLAQUE SANS OUBLIER D'UTILISER LA PROTECTION CHALEUR POUR LES FILS.
- METTRE LE JOINT EN CAOUTCHOUC SUR LE NOUVEAU SUPPORT DE PLAQUE D'IMMATRICULATION COMME INDIQUE DANS IMAGE 13.
- INSTALLER L'ENSEMBLE ET SECURISER EN UTILISANT 6 RONDELLES M6x20mm DE LONG, ET 3 ECROUS NYLOC FOURNIS COMME SUR LES IMAGES 14 ET 15.
- MONTER LES CLIGNOTANTS DE SON CHOIX COMME INDIQUE EN IMAGE 16 (bleue : droite / orange : gauche).
- SI VOUS SOUHAITEZ EN UTILISER DES PETITS, NOUS PROPOSONS PRODUIT R&G (CODE RG370) (deux passe-fils sont livrés en KIT pour combler les trous).
- SI VOUS UTILISEZ UNE GRANDE PLAQUE D'IMMATRICULATION, il est VIVEMENT CONSEILLE D'UTILISER LE SUPPORT ET SES CLIGNOTANTS (TB0113 PARTIE 2)
- SI VOUS UTILISEZ UNE PETITE PLAQUE, VOUS POUVEZ UTILISER LE SUPPORT INDICATEUR COURT (TB0113 PARTIE 3).
- LA PROTECTION CHALEUR PEUT SE RETRECIR COMME SUR L'IMAGE 18.
- APPLIQUER L'ENSEMBLE A LA PLAQUE D'IMMATRICULATION ET SECURISER EN UTILISANT LES LONG BOULONS A TETE RONDE M4x5mm ET LES RONDELLES COMME SUR L'IMAGE 18.
- UTILISER LES CONNECTEURS FIGURANT SUR L'IMAGE 17.
- VERIFIER LE BON FONCTIONNEMENT DES LUMIERES A CE STADE.
- RANGER LES FILS POUR EVITER TOUT ACCROC LORS DU REMONTAGE DU SIEGE.
- REMETTRE LE SIEGE
- REMETTRE LA PLAQUE D'IMMATRICULATION (REQUIERT EVENTUELLEMENT UN FORAGE).
- **IMPORTANT:** SI LE MONTAGE S'OPERE AVEC UN PLAQUE D'IMMATRICULATION DE GRANDE TAILLE, IL EST DE VOTRE RESPONSABILITE DE CONTROLER QU'AUCUN RISQUE DE COLISION ENTRE LA PLAQUE ET LA ROUE ARRIERE NE PUISSE S'EFFECTUER. CELA POURRAIT SE PRODUIRE NOTAMMENT EN CAS DE TROUS OU DE

R&G Racing

Unit 1, Shelley's Lane, East Worldham, Alton, Hampshire, GU34 3AQ

Tel: +44 (0)1420 89007 Fax: +44 (0)1420 87301 www.rg-racing.com Email: info@rg-racing.com



BOSSÉS PRESENTS SUR LA ROUTE.

NE PAS EFFECTUER DE VÉRIFICATION POURRAIT ENTRAINER DES BLESSURES GRAVES POUR LE MOTARD.

- SELON LA LOI LOCALE, AJUSTER LES CLIGNOTANTS SELON LA LOI EN VIGUEUR
- TESTER LES CLIGNOTANTS ET LES AUTRES LUMIÈRES AVANT DE PRENDRE LA ROUTE.

ISSUE 1 14/12/2011 (NSY)

CONSUMER NOTICE

The catalogue description and any exhibition of samples are only broad indications of the Products and R&G may make design changes which do not diminish their performance or visual appeal and supplying them in such state shall conform to the order. The Buyer acknowledges no representation or warranty (other than as to title) has been given or will apply to the Products other than those in R&G's order or confirmation and the Buyer confirms it has chosen the Products as being of merchantable quality and suitable for its particular purposes. Where R&G fits the Products or undertakes other services it shall exercise reasonable skill and care and rectify any fault free of charge unless the workmanship has been disturbed. The Buyer is responsible for ensuring that the warranty on the motorcycle is not affected by the fitting of the Products. On return of any defective Products R&G shall at its option either supply a replacement or refund the purchase money but shall not be liable if the Products have been modified or used or maintained otherwise than in accordance with R&G's or manufacturer's instructions and good engineering practice or if the defect arises from accident or neglect. Other than identified above and subject to R&G not limiting its liability for causing death and personal injury, it shall not be liable for indirect or consequential loss and otherwise its liability shall be limited to the amounts paid by the Buyer for the Products or the fitting or service concerned. These terms do not affect the Buyer's statutory rights.

R&G RACING RETURNS POLICY (NON-FAULTY GOODS)

Returns must be pre-authorized (if not pre-authorized the return will be rejected). Goods may only be returned direct to us if they were purchased direct from us (customer must prove if necessary). Otherwise to be returned to original vendor. Goods must be in resellable condition, in the opinion of R&G Racing. All returns are subject to a 25% restocking and handling fee (25% of the gross value exc. P&P – at the prevailing price at time of purchase). The customer must pay any and all carriage charges. No returns of discontinued products, unless within 14 days of purchase. This policy does not affect your statutory rights and does not refer to faulty goods.

R&G Racing

Unit 1, Shelley's Lane, East Worldham, Alton, Hampshire, GU34 3AQ

Tel: +44 (0)1420 89007 Fax: +44 (0)1420 87301 www.rg-racing.com Email: info@rg-racing.com